

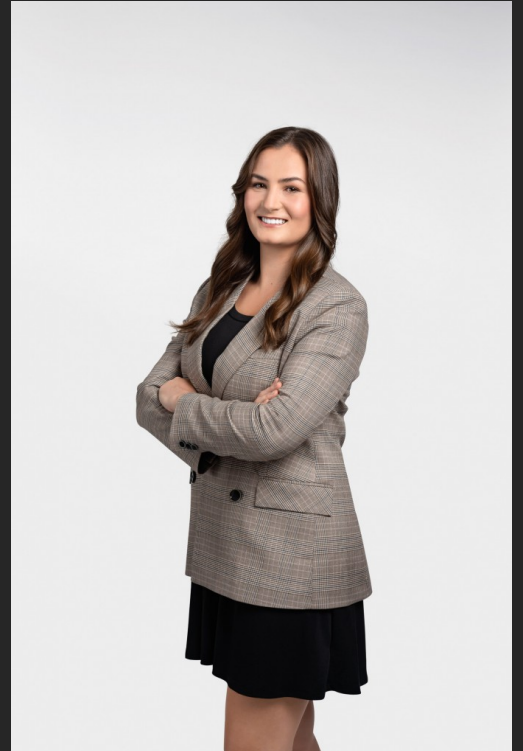
Emily Whyte

Associate

403.873.3751

ewhyte@mcleod-law.com

OFFICE: DOWNTOWN



ASSISTANT

Cherie Height

403.254.3831 cheight@mcleod-law.com

PRACTICE AREAS

Business Law

Emily is an associate in the Business Law group, practicing in corporate/commercial law, securities and corporate finance.

Emily completed her dual JD/MBA at the University of Saskatchewan and a Bachelor of Arts (Honours) degree in Global Development Studies at Queen's University. While in law school Emily served in many positions, including as the Vice President of Athletics for the Law Students' Association, a student volunteer with the John Howard Society through Pro Bono Students Canada, and a special projects volunteer with the Refugee Hub.

Outside of the office, Emily enjoys sailing, testing out new recipes and restaurants, travelling, and pet-sitting the many dogs in her building.

Admissions

2024 Alberta