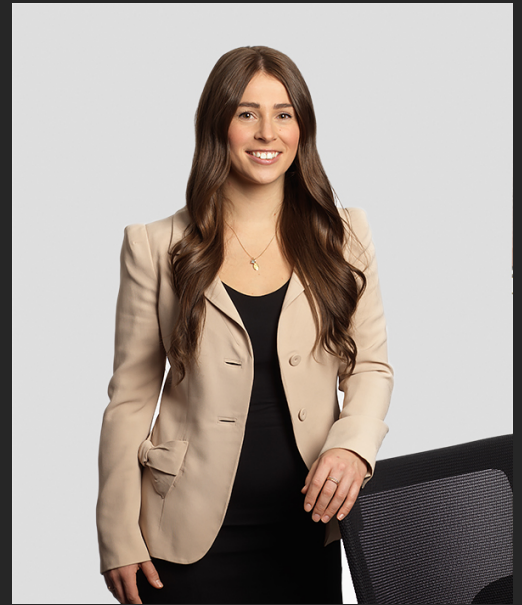


Chelsea E. Jones

Associate

403.225.6403

cejones@mcleod-law.com



ASSISTANT

Marsha MacDougall

403.254.3697 mmacdougall@mcleod-law.com

PRACTICE AREAS

Family Law

Child & Spousal Support

Division of Property

Cohabitation & Prenuptial
Agreements

Parenting & Custody

I believe in applying determination and professionalism in providing real-world solutions for family related matters.

Chelsea is an associate in the Family Law group. She understands that there are unique circumstance within every family and strives to help client's find a resolution in the most amicable and cost-effective way.

Education

2018 University of Alberta, JD

2014 Mount Royal University, BA

Admissions

2019 Alberta

Memberships

- Law Society of Alberta
- Canadian Bar Association of Alberta

Community

- Student Legal Services of Edmonton
Volunteer
- Canadian Diabetes Association
Volunteer
- Aikido Tanren Juku
Volunteer
- Mount Royal University
Volunteer, Career Fair
- Calgary's "Clean to the Core"
Volunteer